

CODICE / CODE / REF.:

77FT2020.07.10

MODELLO / MODEL / MODELE:

NEW EUROSKY 22/2/10 JIB HQ

VEICOLO / VEHICLE / VEHICULE:

ASHOK LEYLAND Partner BS6 14 ft LB

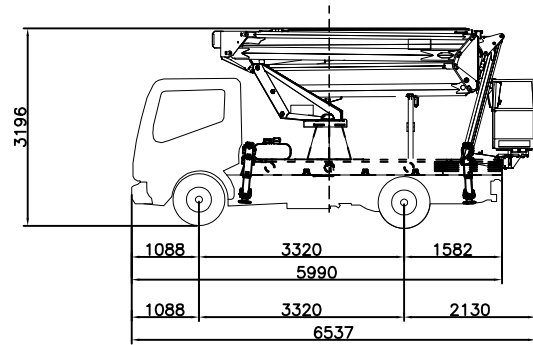
PTT / GW / PTC:

7490 kg

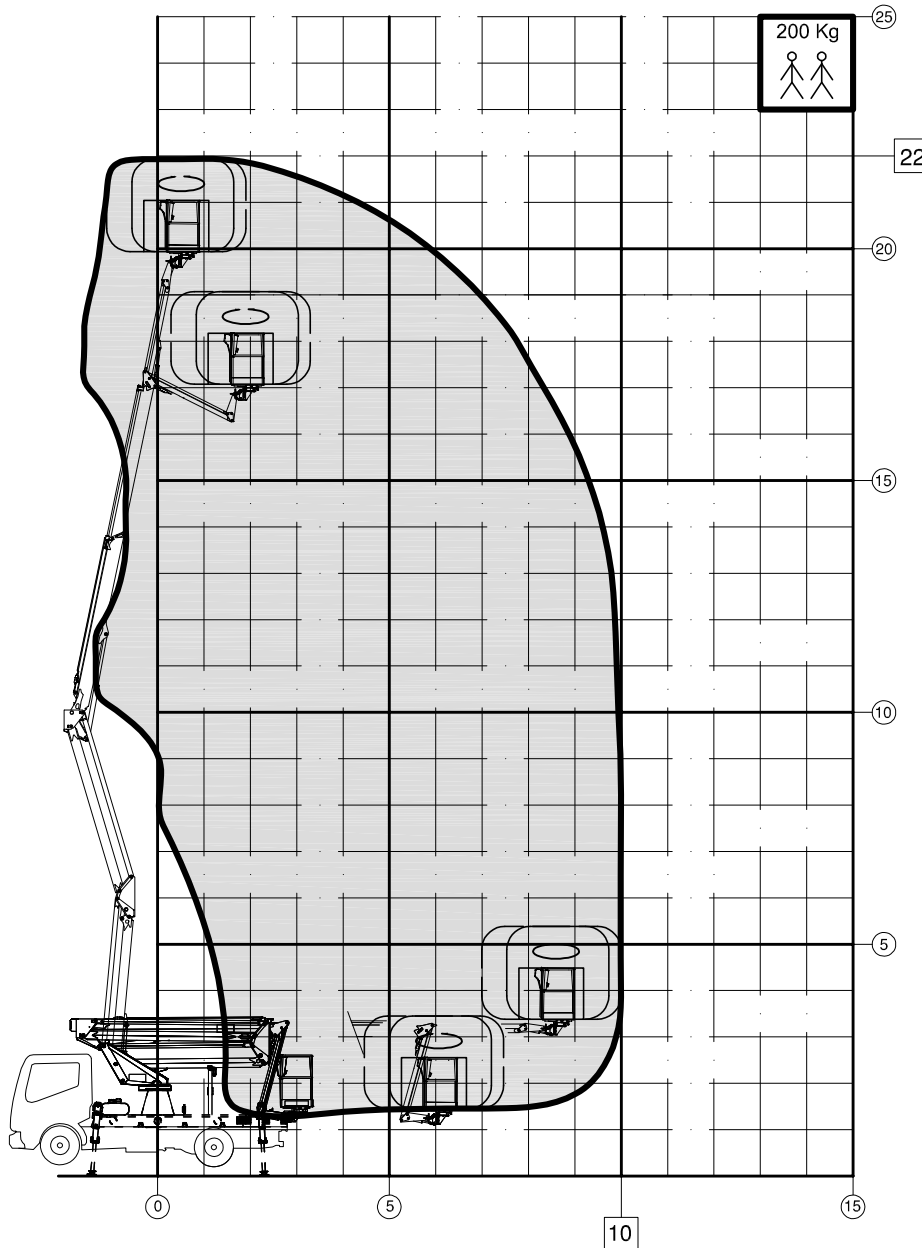
PASSO / WHEELBASE / EMPATT:

3320 mm

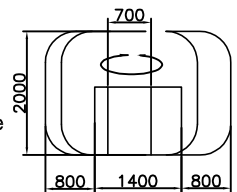
ASSEMBLY EXAMPLE



CO.ME.T Officine S.p.A. - si riservano il diritto di apportare modifiche in sede esecutiva senza preavviso - reserves the right to make any technical modification without notice - se réservent le droit d'apporter des modifications techniques sans préavis



Area lavoro navicella
Working area basket
Zone de travail nacelle



CARATTERISTICHE TECNICHE TECHNICAL FEATURES DONNES TECHNIQUES	
Altezza di lavoro Working height Hauteur de travail	22m
Portata Working load Charge utile	200 Kg
Raggio max. di lavoro Working range Etendu latérale max.	10m
Articolazione braccio superiore Upper boom articulation Articulation bras supérieur	0°+80°
Articolazione braccio inferiore Lower boom articulation Articulation bras inférieur	0°+85°
Articolazione Jib Jib articulation Articulation Jib	-15°+90°
Rotazione torretta Turret rotation Rotation de la tourelle	360°
Ciclo completo di manovra Mnoeuving complete cycle Cycle complet de manoeuvre	5.30 min
Isolamento braccio superiore Upper arm isolation Isolement du bras supérieur	-
Isolamento braccio inferiore Lower arm isolation Isolement du bras inférieur	-
Sollevamento materiale Material lifting Matériel de levage	-
Conforme in conformity with en conformité avec	CE